

Embedding music as Scorch files in iWeb

iWeb

iWeb is a website building program which is part of Apple's iLife 2006 suite. iWeb is ideal for education and for first-time website authors because it requires no HTML code knowledge and produces very good-looking pages. It's also useful for those with some website experience who find updating their website regularly a little tedious. Some limitations, however, may be evident to those used to professional products such as Dreamweaver.



Sibelius and Scorch

Sibelius is the world's leading music notation program. It is very easy to use yet makes professional standard scores and is used by many of the world's biggest music publishers. Sibelius also allows export of scores to its Scorch format, which is designed to make scores available over the internet. Through the freely available Scorch plug-in, anyone can view, playback at any tempo, transpose and print Sibelius scores online. Scorch has many applications both in education (rehearsal parts, dissemination of worksheets, and so on) and in the professional world.



Putting Scorch files in an iWeb site

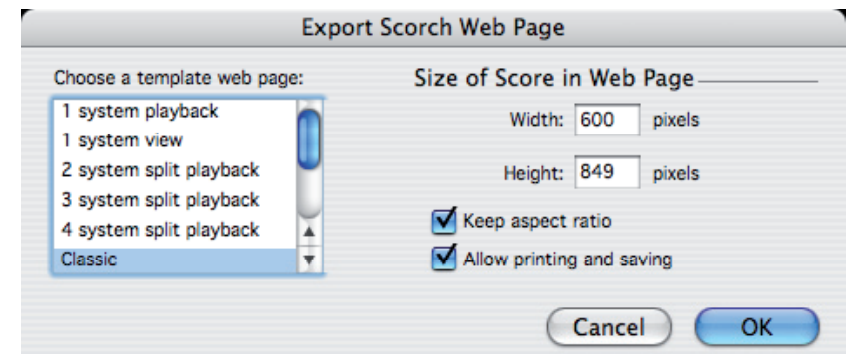
This short document presumes that you have both iWeb and Sibelius (the latest version is Sibelius 4, but this will work with any version of Sibelius). iWeb is not really designed to handle such plug-ins, but the workaround is fairly simple.

Step 1: Export your scores from Sibelius

In Sibelius 4, go to File > Export > Scorch Web Page. Choose a folder to save your scorch file in, click Save, and you will see the dialog box on the right. Unless you're experienced at creating Scorch sites, choose Classic from the list on the left, and tick "Allow printing and saving" so people viewing your score can print it as well as play it back.

If preparing your site for a school intranet or similar resource where you can be sure computers that view the score will have a particular resolution, you can set the width to something a little higher, like 1024.

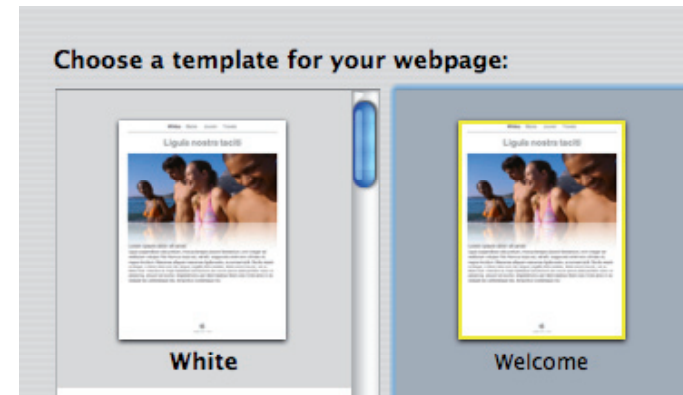
Finally, click OK, and repeat this step for any other scores you want to share.



Step 2: open a new iWeb page

Just as I've assumed that you know how to make your Sibelius score, I'm assuming you know how to make a basic website with iWeb. It only takes a few minutes to learn, anyway!

Create a new page based on the Welcome template. Once open, delete the picture (or change it to one appropriate to the page, for instance a page with "my string music might have a picture of a string instrument) and change the title as necessary.



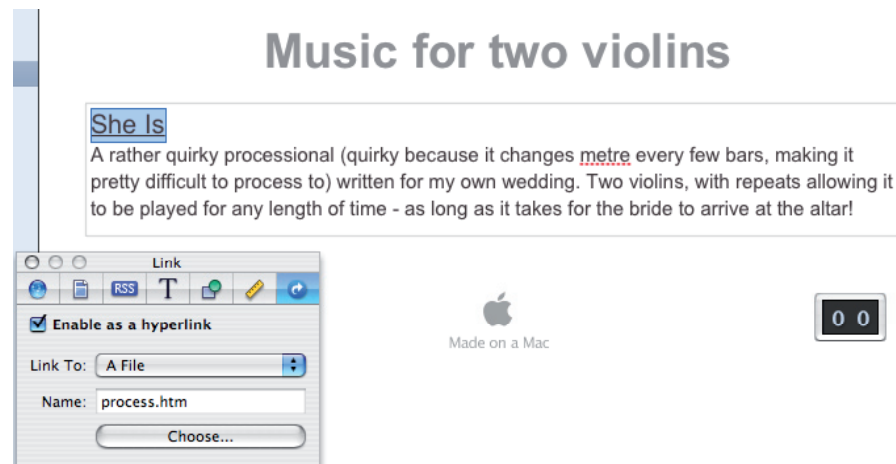
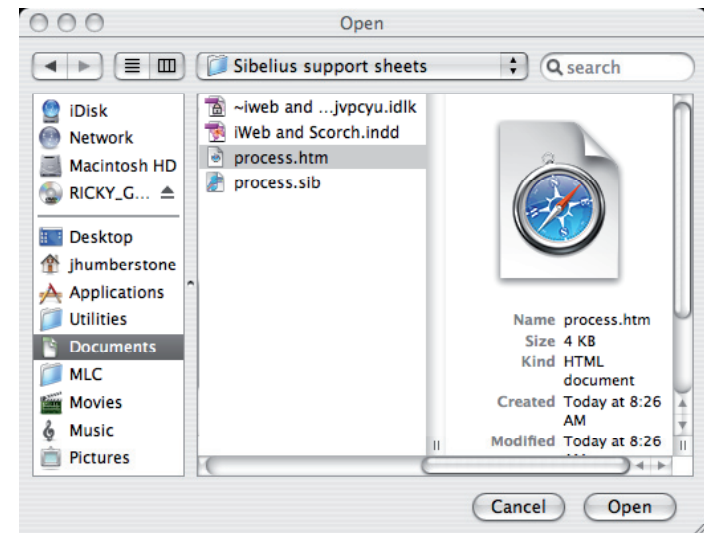
Step 3: Link to your Scorch page

In the body text, include some information about your score (instrumentation, grade, duration, etc) and the title of the piece.

Highlight the title of the piece, then go to Insert > Hyperlink > File. A dialog box will open, as seen on the right, asking you to choose the file to link to. Browse to the folder you saved your Scorch file(s) in, and you will see **two** files for each score. One is a Sibelius file, and ends with *.sib*, and one is an html file and ends with *.htm*.

In this step you must choose the *.htm* file, which is telling iWeb to open a new webpage to load your score.

Then click open.



Music for two violins

She Is

A rather quirky processional (quirky because it changes metre every few bars, making it pretty difficult to process to) written for my own wedding. Two violins, with repeats allowing it to be played for any length of time - as long as it takes for the bride to arrive at the altar!

Link

Enable as a hyperlink

Link To: A File

Name: process.htm

Choose...

Made on a Mac

00

Step 4: Cause the Sibelius file to be uploaded

We've now created a link to Sibelius' HTML file, but this is only half the job. We need iWeb to upload the *.sib* Sibelius file to the same folder on the server in order for the Scorch plug-in to find it and open it.

To make this happen, go to Insert > Text, and insert a small text box which you should position at the bottom of the page. Into it type one full stop (period) and highlight it.

Now go to Insert > Hyperlink > File again, and this time when the dialog box opens, choose your *.sib* Sibelius file. This will make iWeb upload it along with the page, so that when someone clicks on the first link, the score will load properly. You *must* upload **both** files.

Step 5: Cover your tracks

You should now repeat steps 3 and 4 for any extra Scorch files you want to upload. When you get to Step 4, just add another full stop in the same text box, and link the new *.sib* file to it.

You're now left with a text box with one or more dots in it. Since the reason for this text box is only to make iWeb upload the Sibelius files, you can now hide it.

You can do this by highlighting the text, opening the Fonts dialog, and changing it to Size 1 (which doesn't actually make it invisible, just very small!), and/or you can put an image or button (Insert > Button > Hit Counter, for example) over the top of it.

More Information?

About Apple's iWeb

<http://www.apple.com/au/ilife/iweb/>

About Sibelius 4

<http://www.sibelius.com/products/sibelius/index.html>

Download the Scorch plug-in

<http://www.sibelius.com/cgi-bin/download/get.pl?com=sh&prod=scorch>

See the sample site used in this instructional

<http://web.mac.com/aftertrace/iWeb/Sibelius%20Scorch/Welcome.html>

